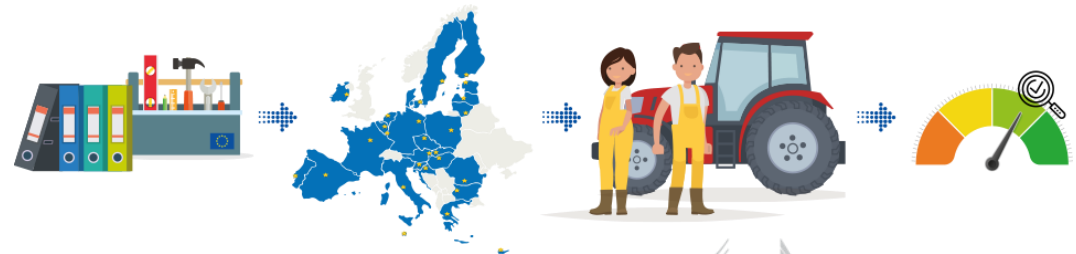




Implications of the CAP strategic planning for the MS

International Seminar:

How a bill becomes a better CAP – Can a broken system be fixed?



22 NOVEMBER 2018

A STREAMLINED CAP PLAN

Three different administrative processes **will be integrated** into a single one.

- Single strategic approach based on a needs assessment
- Ensuring level-playing field and legal certainty

26 Direct Payments notifications per MS
118 rural development programmes
65 sectorial strategies



27 CAP plans
At the level of MS

The 9 Specific Objectives



Entry point for the Strategic Planning

Types of interventions

Support viable farm income and resilience across the Union to enhance food security

Enhance market orientation and increase competitiveness, including greater focus on research, technology and digitalisation

Improve the farmers' position in the value chain

Contribute to climate change mitigation and adaptation, as well as sustainable energy

Foster sustainable development and efficient management of natural resources such as water, soil and air

Contribute to the protection of biodiversity, enhance ecosystem services and preserve habitats and landscapes

Attract young farmers and facilitate business development in rural areas

Promote employment, growth, social inclusion and local development in rural areas, including bio-economy and sustainable forestry

Improve the response of EU agriculture to societal demands on food and health, including safe, nutritious and sustainable food, food waste, as well as animal welfare



CAP
Strategic
Plan

BISS

CRISS

CIS-YF

Eco-schemes

Coupled support

Sectorial types of interventions

Management commitments

Natural constraints

Area-specific disadvantages

Investments

Installation of YF and start-up

RM tools

Cooperation

Knowledge exchange and information



European
Commission



Content of the CAP Strategic Plan

- An assessment of the needs
- An intervention strategy
- A description of the interventions
 - *Common elements*
 - *Each intervention (direct payments, sectoral and rural development)*
- Target and financial plans
- A description of the governance and coordination system
- A description of the elements that ensure modernisation and simplification of the CAP



ASSESSMENT OF NEEDS AND INTERVENTION STRATEGY

- **Summary of the SWOT analysis**
- **Identification, prioritisation and ranking of needs**
- **Selection of the interventions, following a sound intervention logic**
- **Targets for result indicators and related milestones (→ indicator plan)**
- **Allocation and justification of financial resources (→ financial plan)**



DESCRIPTION OF THE INTERVENTIONS

- **Common elements (definitions & minimum requirements, conditionality, Technical Assistance & CAP Network, elements related to direct payments, coordination & complementarities with other Funds of the Union)**
- **Description of the design/requirements of the intervention (territorial scope, eligibility conditions, contribution to specific objectives, financial allocations...)**
- **Where applicable relevant baseline elements, and explanation as to how the commitment goes beyond the mandatory requirements**



GOVERNANCE SYSTEMS AND COORDINATION SYSTEMS

- **Identification of governance and coordination bodies**
 - ❖ Competent Authority, Managing Authority, Paying agencies, Coordinating Body, Certification Body, Monitoring Committee, other delegated and intermediate bodies
 - ❖ Competent bodies responsible for conditionality
 - ❖ AKIS coordination bodies, including farm advice
- **Description of the monitoring and reporting structure**
- **Information on the management, area monitoring and control systems, including penalties**
 - ❖ IACS
 - ❖ Non-IACS
 - ❖ Conditionality



MODERNISATION AND SIMPLIFICATION

- **Modernisation:**
 - ❖ Identification of the needs, based on the SWOT analysis, in relation to the cross-cutting objective related to fostering and sharing of knowledge innovation and digitalisation
 - ❖ Overall organisational set-up of the AKIS
 - ❖ Description of the farm advisory services provided
 - ❖ Description of how advisory services, research and CAP networks will work together within AKIS, and how advice and innovation support services are provided
 - ❖ Digitalisation strategy and for the use of technology and data-driven solutions
- **Simplification and reduction of administrative burden for final beneficiaries**



Annexes of the CAP Strategic Plan

- 1. Ex-ante evaluation + Strategic Environmental Assessment (SEA)**
- 2. SWOT analysis**
- 3. Consultation of the partners**
- 4. Crop-specific payment for cotton**
- 5. Additional national financing provided within the scope of the CAP Strategic Plan**



Approval of the CAP Strategic Plan

- ✓ MS responsible for developing plans, incl. consultation of partners and relevant authorities
- ✓ Commission approval of plans, 8 months (incl. sending of observations within 3 months → stop the clock mechanism)
- ✓ Approval criteria relate to, for example:
 - Completeness – consistency – coherence- contribution to specific objectives etc.
- ✓ Approval of incomplete plans: duly justified cases and subject to provision of indicative targets and financial plan for the whole plan
- ✓ **NB: Annexes and section on control and penalties not approved**



Amendment of the CAP Strategic Plan

- ✓ MS submit request – duly justified and explained
- ✓ Once a year (possible exceptions, e.g. correction of clerical errors)
- ✓ Commission approves – 3 months (incl. sending of observations within 30 wd → stop the clock mechanism)



European
Commission